


eSync 2.5
USER'S GUIDE

FIRST EDITION

February 2009

COPYRIGHT

© 1987-2009 Henry Schein, Inc. All rights reserved.

SOFTWARE LICENSE NOTICE

Your license agreement with Henry Schein, Inc., which is included with the product, specifies the permitted and prohibited uses of the product. Any unauthorized duplication or use of eSync in whole or in part, in print, or in any other storage and retrieval system is forbidden.

LICENSES AND TRADEMARKS

eSync, DENTRIX, Henry Schein, and the 'S' logo are registered trademarks of Henry Schein, Inc.; Microsoft, Windows, Windows 98, Windows 2000, Windows XP Professional, Windows NT, Windows Vista, Excel, Word, and PowerPoint are trademarks of Microsoft Corporation.

DENTRIX AND MICROSOFT WINDOWS

eSync operates in a graphical environment called Windows, created by Microsoft Corporation. Microsoft Windows gives a standard look and feel to eSync and all other Windows applications. To run eSync, you need to first license and install Microsoft Windows.

Installing eSync

Before you can install eSync, you must download the program from the QuickBill website at <http://www.nationalinfo.com/products/quickbill.asp#downloads>. You must have DENTRIX G4 installed in order to run the eSync program. To install eSync:

1. Launch Installer

Double click the eSync setup file (downloaded from the QuickBill website) to open the eSync Install screen.

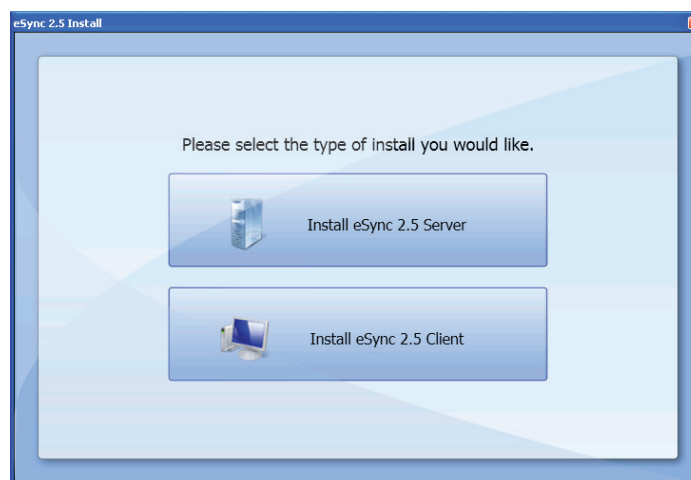
2. Click Installation Type

Click Install **eSync 2.5 Server** or **Install eSync 2.5 Client** to open the eSync 2.5 Install Customer Number screen.

- **Server Install:** The eSync 2.5 Server transfers information from your eService accounts to your DENTRIX database. Every practice must install the eSync 2.5 Server on a single workstation that has access to your DENTRIX data base and a high-speed internet connection.

Note: You must install the eSync 2.5 Server before installing eSync Clients on your network.

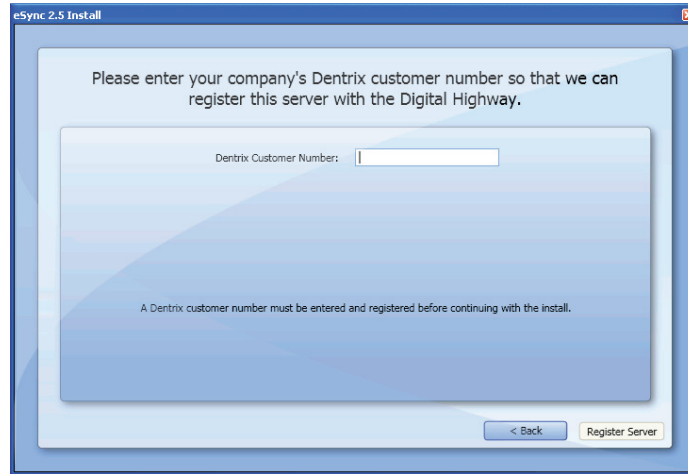
- **Client Install:** If your practice has multiple workstations, install the eSync Client on each workstation (except the workstation on which the eSync 2.5 Server has been installed). The eSync Client communicates directly with the eSync Server. When data is received from the web, the eSync Server distributes notifications to each workstation on which the eSync Client has been installed.



3. Enter Customer Number

If you are installing the eSync Server, enter your DENTRIX customer number and click **Register Server**. If you are installing the eSync Client, enter your DENTRIX customer number and click **Register Client**.

Note: If you have problems registering your customer number, contact technical support at (800) 734-5561.

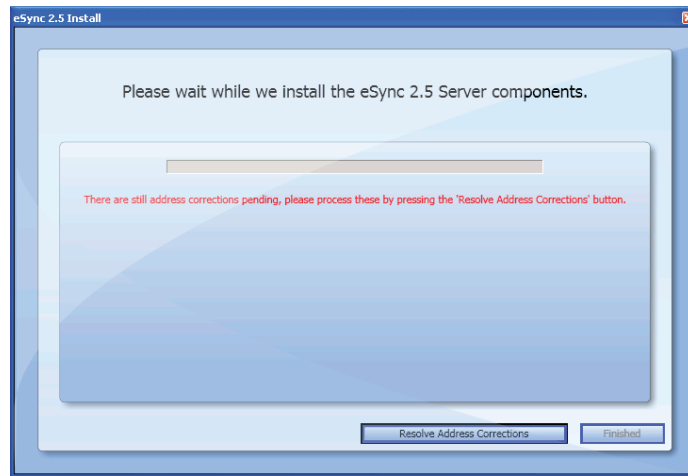


4. Click Resolve Address Corrections (Optional)

If eSync detects unresolved address corrections, the eSync 2.5 Install Address Corrections screen appears. You must resolve address corrections before continuing with the installation. To resolve address corrections:

a. Click Resolve Address Corrections.

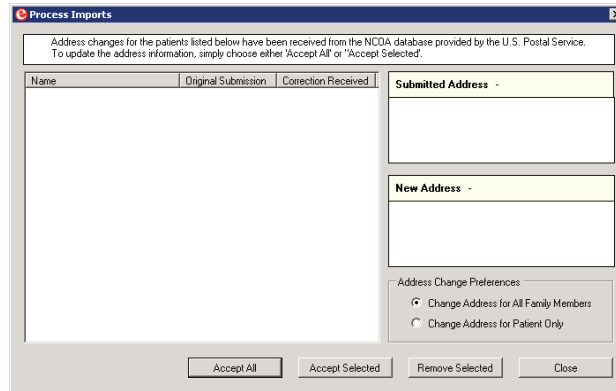
Click Resolve Address Corrections to open the Process Imports dialog.



b. Highlight Patients and Click a Resolution Option

Highlight one or more patients and click one of the following resolution options:

- **Accept All:** Updates address information for all patients in the Process Imports dialog.
- **Accept Selected:** Updates address information for the selected patients.
- **Remove Selected:** Removes selected patient from the Process Imports dialog without updating the patients' address information.

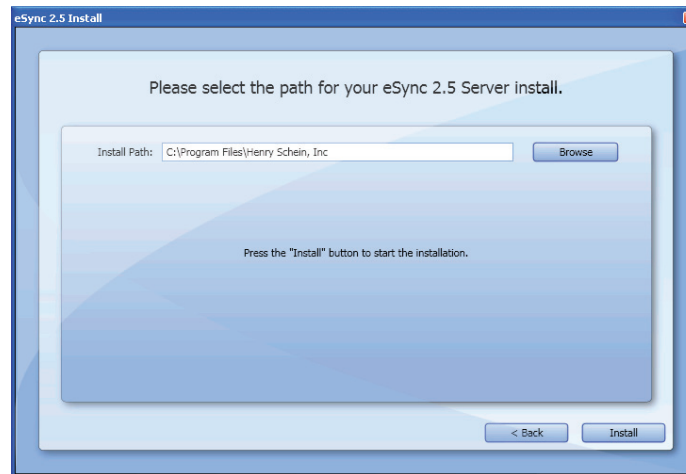


c. Click Close

After resolving all address corrections, click **Close** to close the Process Imports dialog. The Program Files screen appears.

5. Specify Program Files Location (Optional)

If you want to specify a location for the eSync program files, click **Browse** and select the location



6. Click Install

Click **Install** to install eSync 2.5. The eSync 2.5 Install Successful screen appears when the application has been successfully installed.

7. Click Finished

Click **Finished** to close the eSync 2.5 Install Successful screen.

